

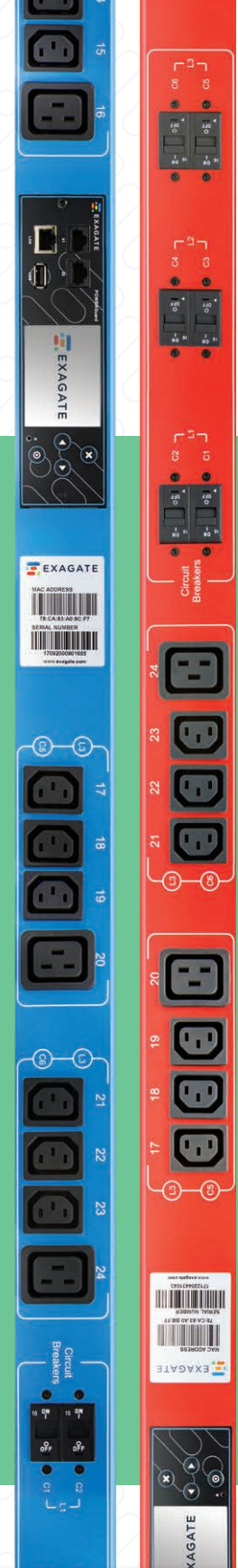


EXAGATE POWERGuard IP PDU

You can distribute energy with the high-tech POWERGuard IP PDU, which can be equipped with environment monitoring sensors with a user-friendly interface for monitoring and managing the energy consumption of your Data Center Cabinets. With the optional SmartPack centralized management software, you can monitor your entire energy infrastructure professionally.

Large Product Family

POWERGuard IP PDU Product Family Enables power distribution and monitoring for your Data Center Cabinets. Designed, high-tech intelligent PDU our system, +/- 1% measurement accuracy is stable at ambient temperature up to 60 degrees. The control module includes a high resolution screen with “Hot Swap”, a circuit breaker that can operate independently, and an environment monitoring sensor hub connection option. Exagate IP PDU can meet different demands and offers an economical alternative solution for your data Center.



Product Family	Inlet Metering	Outlet Metering	Breaker Metering	Outlet Switching	IP
PWG-91	✓		✓		✓
PWG-92	✓		✓	✓	✓
PWG-93	✓	✓	✓		✓
PWG-94	✓	✓	✓	✓	✓

+/- 1% KWH Measurement Accuracy

High energy measurement accuracy +/- 1%

Size & Dimensions

Thin profile structure 56mm depth and Distinctive design with 56mm width.

Setup Advantages

Flexible mounting options that can be installed in any type of rack cabinet.

Temperature Resistance

Ability to work up to 60 degrees and measure the values stably.

Relay Output Option

PDU with relay output enables active devices to be switched on and off remotely.

Complete energy monitoring along with Single-phase, Three-phase options

V, A, kW, kVA, kVAR, kWh, f, PDU monitoring of power factor parameters, single phase or 3 phase PDU options.



Colour Designs

Black, Blue and Red coloured PDU options

Sensor Options

Temperature, humidity, water detection, smoke and door sensor connection options. Ability to connect 4 temperature and humidity sensors per cabinet.



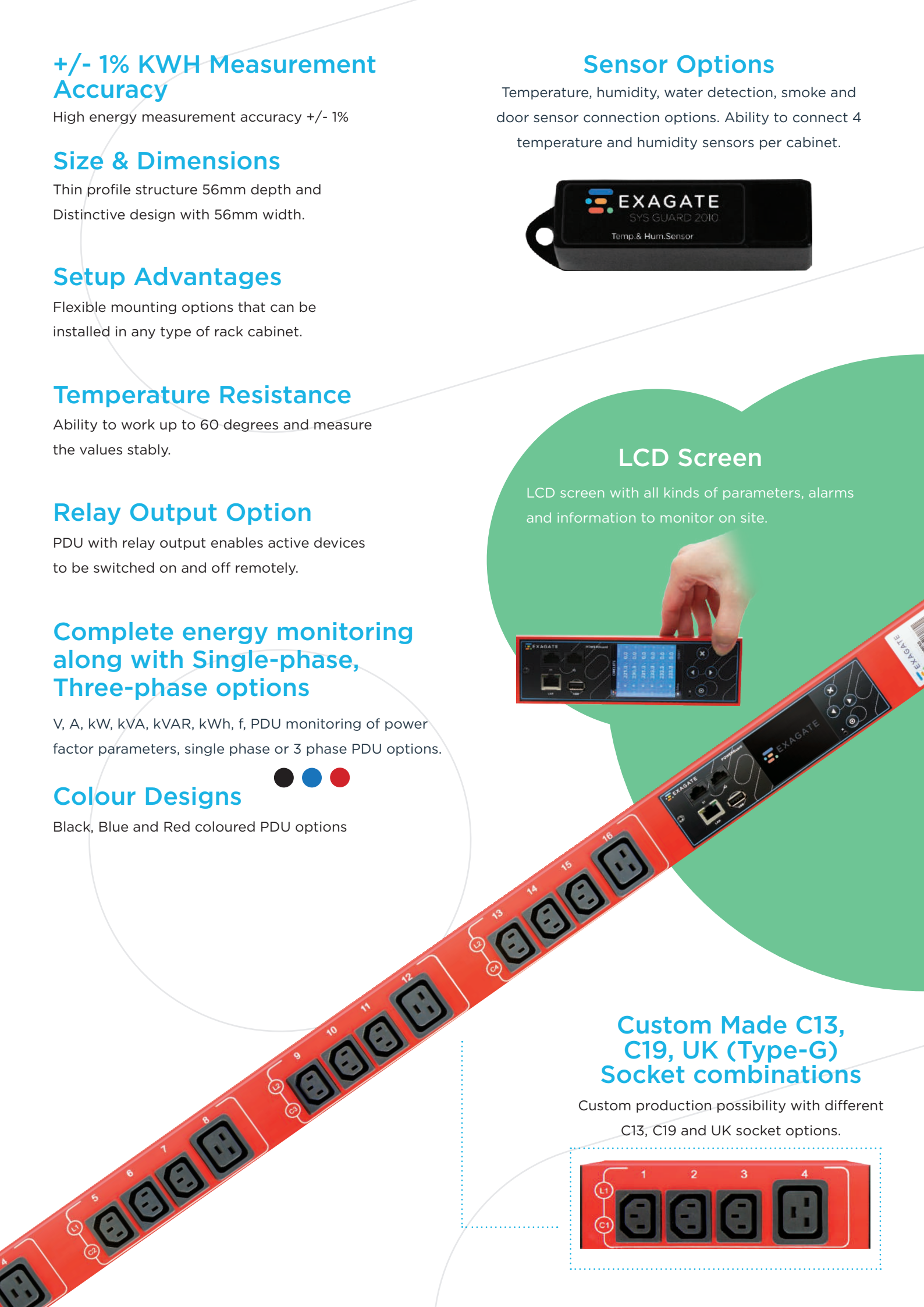
LCD Screen

LCD screen with all kinds of parameters, alarms and information to monitor on site.



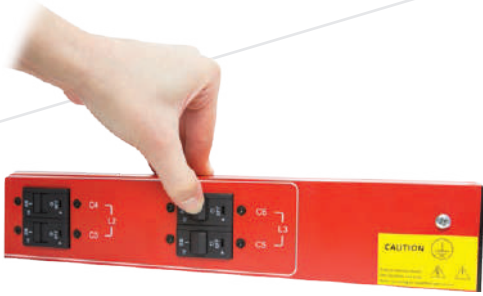
Custom Made C13, C19, UK (Type-G) Socket combinations

Custom production possibility with different C13, C19 and UK socket options.



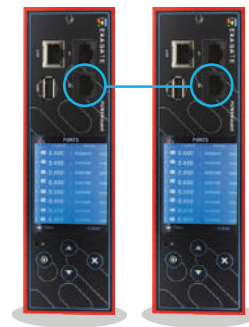
Hydraulic-Magnetic Circuit Breakers

Support for web interface compatible with mobile devices and monitoring of all data via web interface.



Cascade 8 PDU

Up to 8 PDU cascades over a single IP to reduce network traffic and manage the system using fewer IP's.



Hot Swap

Easily replaceable control unit in case of malfunction without disconnecting power.



Mobile Device Compatibility

Support for web interface compatible with mobile devices and monitoring of all data via web interface.



Locked C13 and C19 sockets

External locking equipment ensures that the C13 and C19 sockets remain stable on the PDU.

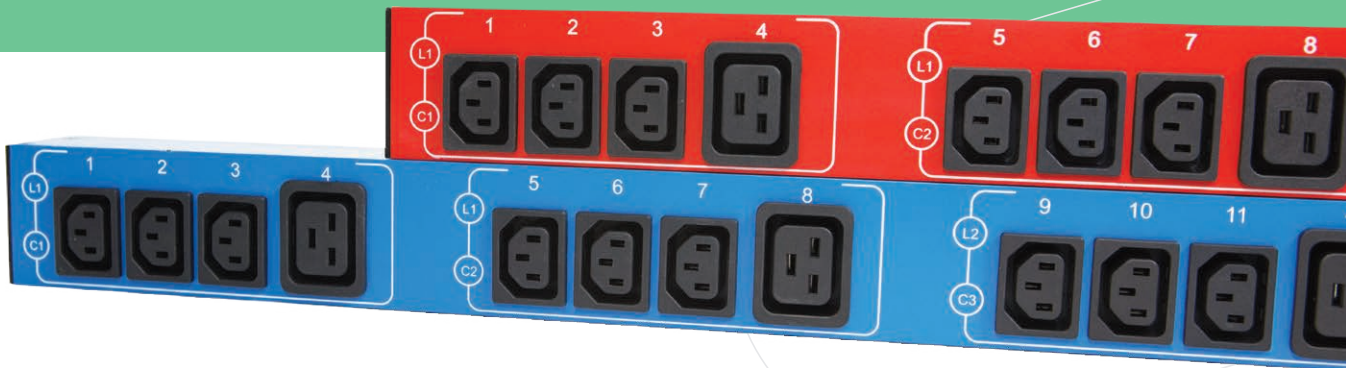


MAXIMIZE ENERGY EFFICIENCY IN YOUR DATA CENTERS WITH SMARTPACK CENTRAL MANAGEMENT SOFTWARE

SmartPack Energy Monitoring Reports

Graphical and Numerical Reports

- Energy efficiency reports (PUE)
- Carbon emission reports
- Energy consumption reports
- Energy cost reports
- Cooling capacity reports
- Energy trend reports



Yeşilce Mahallesi, Doğa Sokak, Kökten Plaza, No:6 Kat:2 Kağıthane, İstanbul / Turkey

P: +90 212 275 73 22

info@exagate.com www.exagate.com