

PWG2 INTELLIGENT PDU SERIES

Powering the Future of AI & HPC

Exagate's PWG2 Series redefines performance and reliability in power distribution. With **15+ years of trusted expertise** and a global data center footprint, our next-gen PDUs are built for the most demanding environments — from **hyperscale deployments to AI and HPC training racks**.

Engineered for **maximum uptime**, **exceptional durability**, and **seamless integration**, the PWG2 Series is the reliable choice for mission-critical operations.

Discover the Cutting-Edge Features of the PWG2 Intelligent Series

- Up to 100A High Current Support – Single or Three-Phase
- Class 0.5 Metering Accuracy
- Integrated Socket Locking System
- Advanced Power Quality Monitoring
- Fully Customizable Configuration
- Selectable Power Input Angle (0° / 90°)
- Branch Circuit Assignment
- Residual Current Monitoring (RCM)
- Hot Swap Control Module
- Dual Gigabit Network Support
- Multi-Protocol Integration

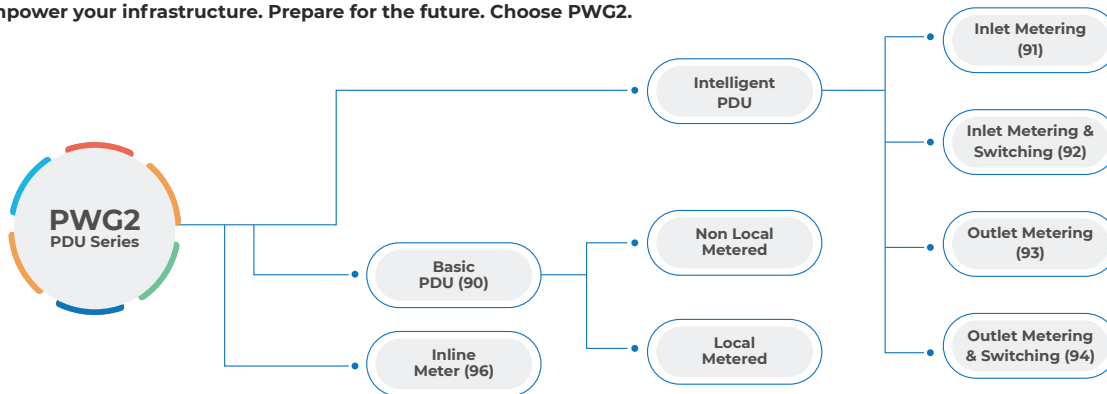
SMART DATA CENTER SOLUTIONS

Powering the Future with Confidence

Discover the strength of **Exagate's PWG2 PDU Series** — the trusted choice of global data center leaders.

Backed by nearly **15+ years of engineering excellence**, Exagate's next-generation **PWG2 PDUs** are designed for unmatched **uptime**, **flexibility**, and **security**. Engineered with advanced R&D and built for mission-critical environments, the PWG2 Series sets a new benchmark in intelligent power distribution.

Empower your infrastructure. Prepare for the future. Choose PWG2.



PDU FOR EVERY NEED

BASIC PDU

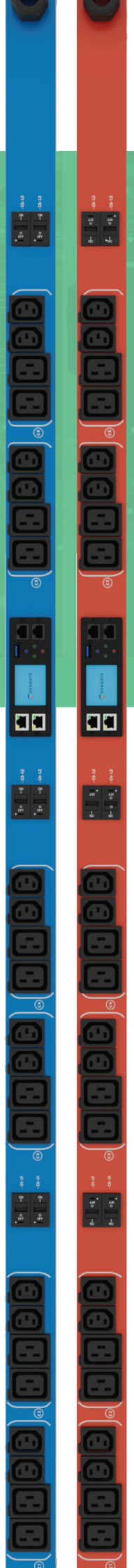
- Local / Non-Local Metered
- 1P/3P
- 16/32/63/80/100A
- Horizontal (8/16 Sockets)
- Vertical (30/36/42/45 Sockets)
- C13/C19

INTELLIGENT PDU

- 1P/3P
- 16/32/63/80/100A
- Horizontal (8/16 Sockets)
- Vertical (24/30/36/42/45 Sockets)
- Inlet Metering
- Outlet Metering
- Inlet Metering & Switching
- Outlet Metering & Switching
- C13/C19

INLINE METER

- 1P/3P
- 16/32/63/80/100A
- 2U
- C13/C19



FEATURES OF PWG2 INTELLIGENT PDU SERIES

+/-0,5 % KWH Measurement Accuracy

Experience precision at its peak with our high-energy measurement accuracy, boasting an impressive +/-0.5% for meticulous data integrity.

0-90 Degrees Selectable Power Input

Optimize your setup with PWG2 featuring a selectable Power Input option, offering 0 or 90 degrees (default design is 90 degrees). This design flexibility caters to your preferences, ensuring efficient and straightforward solutions and saves money & time.

Temperature Resistance

Ensure stable and accurate measurement values even in the most challenging environments, with the capability to operate in temperatures up to 60 degrees Celsius. This temperature resistance ensures reliable performance, maintaining accurate measurement values and system integrity even in harsh operating conditions.

Latching Relay Output Option

Enhance the functionality of your system with PWG2 series featuring a latching relay output option, providing the convenience of remotely toggling active devices. A latching relay is a specialized type of relay that remains in either the open or closed position without the need for constant power consumption.

Experience Complete Energy Monitoring With Options For Both Single-Phase, Three-Phase Configurations

The PWG2 series offers comprehensive energy monitoring capabilities, including parameters such as voltage (V), current (A), power (kW), apparent power (kVA), reactive power (kVAR), energy consumption (kWh), and power factor. With options for both single-phase and three-phase PDU configurations, the PWG2 series provides versatility to accommodate different power distribution setups.

Wide Range Of PDU Options

Unlock the versatility of PWG2 series options, capable of handling up to 100A in both single and three-phase configurations—a true testament to flexibility and power.

Colour Designs

Explore color options, including Black, Blue, and Red, to suit your style and preferences. Curious about other shades? Feel free to ask! We're dedicated to tailoring your PDU to match your unique style and requirements.

Custom Made Socket Combination

Unlock custom production possibilities with a variety of socket options, including C13, C19, UK, and NEMA. Tailor your solution to meet your specific needs.

Colours IPS LCD Screen

Immerse yourself in the brilliance of an IPS color LCD screen, offering a visual feast of parameters, alarms, and vital information—all conveniently at your fingertips for seamless monitoring.

Cascading Up To 8 PDUs

Simplify system management effortlessly with the cascade feature, enabling up to 8 PDUs to converge under a single IP address. This not only reduces network traffic but also streamlines control, all facilitated through the dedicated Ethernet port.

Integrated Unique Socket Locking System

Experience unmatched stability with our integrated locking equipment, ensuring that C13 & C19 sockets remain securely in place on the PDU, providing you with unwavering reliability.

Sliding Mounting Bracket

Effortlessly monitor all your data through our integrated web interface, designed for seamless compatibility with sliding mounting bracket, ensuring accessibility on the go.

Protocol Support

Seamlessly integrate with SNMP, Modbus TCP, and protocols.

Branch Circuit Assignment

Simplify power distribution with our organized outlets, thoughtfully arranged in clear branch circuit patterns and conveniently displayed along the PDU for effortless navigation.

R/G/B LED Indicators

Effortlessly interpret crucial information with our LED signals, providing insights into switching, power status, assigned critical levels, and even potential issues with specific sockets.

Dual Gigabit (10/100/1000) Network

Ensure fast and secure dual network connection for redundancy with our Dual Gigabit (10/100/1000) Network Ports, providing both speed and reliability.

USB 3.0 PORT

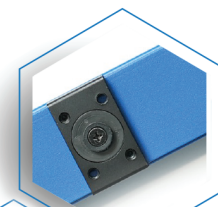
Unlock versatile functionality with the convenience of a USB 3.0 port on our PDU, catering to a range of purposes with seamless connectivity.

Interconnection Of PDUs For Power Status Notifications

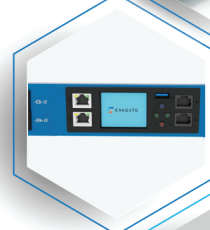
Unlock synergy by connecting 2 PDUs, where the primary unit seamlessly receives power on/off status information from its linked counterpart, ensuring perfectly synchronized functionality.

Residual Current Monitoring

Take electrical safety to the next level with continuous residual current monitoring. This feature provides real-time data on current imbalances, enabling proactive fault detection and heightened security.



Sliding Mounting Bracket



Colour IPS LCD Screen



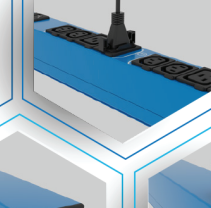
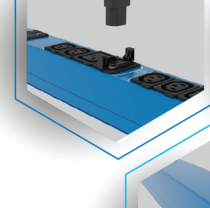
Hot Swap Control Module



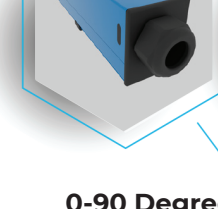
Multiple Sensor Options



Dual Gigabit (10/100/1000) Network



Unique Locking System



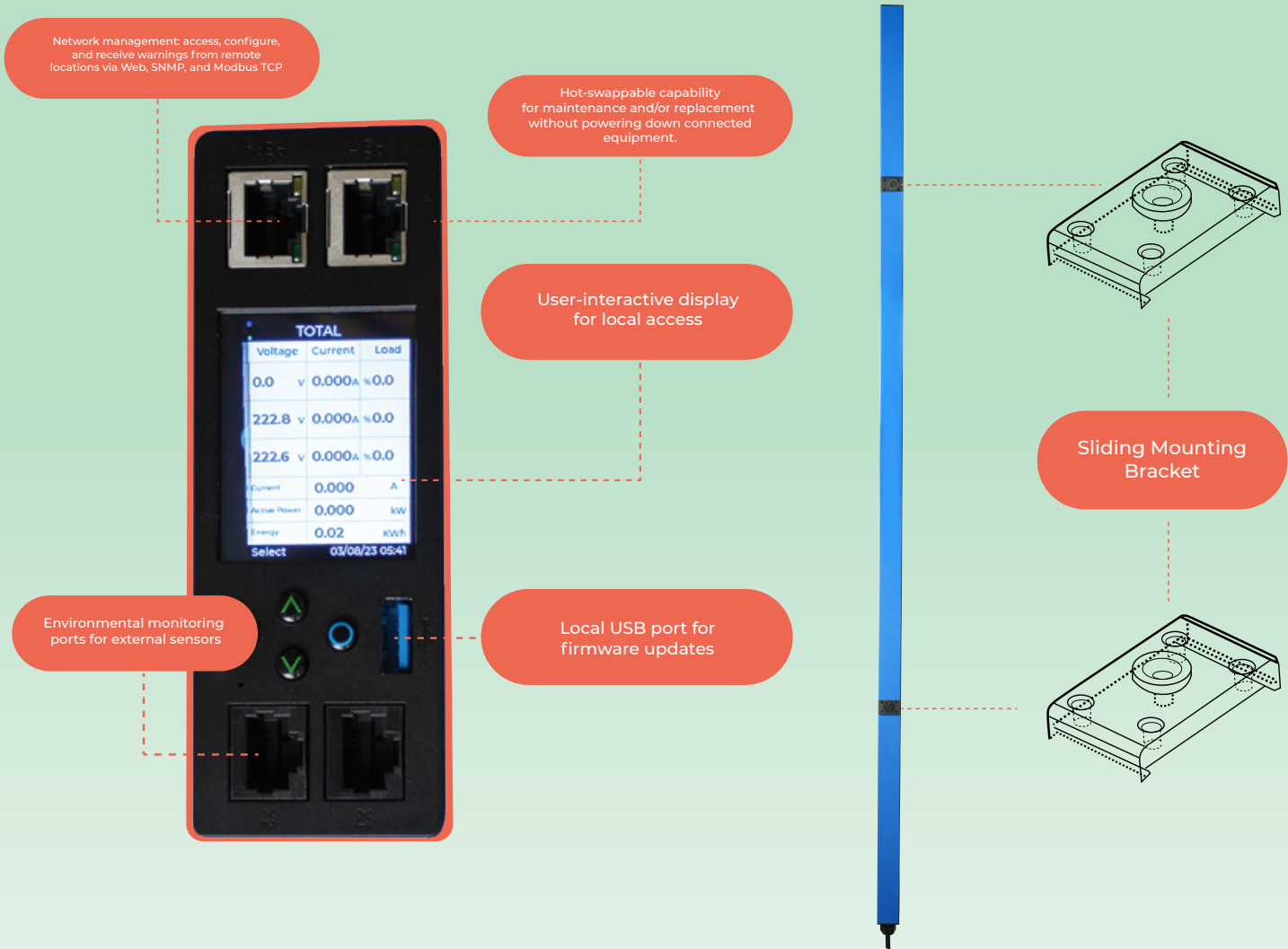
0-90 Degrees Selectable Power Input



Cascading Up To 8 PDUs

Up to 8 PDU cascades over a single IP to reduce manage the system using fewer IP's





PWG2 SERIES: HIGH-CAPACITY, INTELLIGENT PDUs for HPC & AI RACKS

	Inline Meter	Basic PDU	Inlet Metering	Branch Circuit Metering	Outlet Metering	Outlet Switching
PWG2-90		✓				
PWG2-91			✓			
PWG2-92			✓	✓		✓
PWG2-93			✓	✓	✓	
PWG2-94			✓	✓	✓	✓
PWG2-96	✓					

FEATURES OF PWG2 INTELLIGENT PDU SERIES

STANDARD FEATURES

10/100/1000 Dual Network Port

Protocol Support: SNMP / Modbus TCP

Cascade: Up to 8 PDUs

Hot Swap

IPS LCD (Long Life)

Standard Color Options: (Black, Blue, Red)

Hydraulic-Magnetic Circuit Breakers

Sliding Mounting Bracket

Locking Sockets

Cable Length: 1,8 / 3 Meters

Temperature Resistance: Up to 60°C

USB 3.0

Latching Relays

RGB LED Indicators (Except Inlet Metering)

Angled Input Cable Entry (0/90 degrees)

Metering Accuracy %0.5

Power Quality Monitoring

OPTIONAL FEATURES

Inlet Cable (Rubber, Halogen Free, Socket)

Delta Connection

Other Color Options

Socket Combination

Extra Sockets

Nema Socket

Electrical & Electronic & Mechanical Design

Software

Circuit Breaker (For 16A & 1Phase, Removable)

Input Cable Length

Language

RCM (Residual Current Monitoring)

AVAILABLE SENSORS

Temperature & Humidity Sensor Standard

Temperature & Humidity Sensor Extension 4 Ports

Dry Contact Module 6 Ports

Water Detect Cable (1m, 2m, 5m)

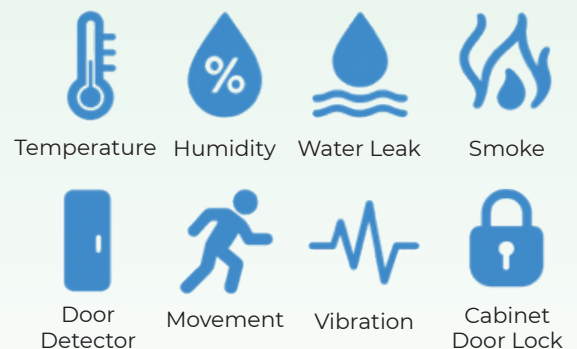
Extension Module For Water Detect Cable

Smoke Detector

Door Detector

Movement

Vibration



SMART DATA CENTER SOLUTIONS

 EXAGATE

www.exagate.com | info@exagate.com  [exagate.com](https://www.linkedin.com/company/exagate.com)  [exagatebt](https://www.instagram.com/exagatebt)

 ACIK